


1:10.000

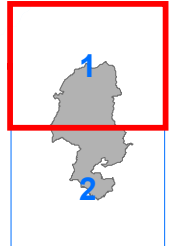

CB-Habitat	Specie della fauna	Idoneità
3140	Bufotes siculus; Discoglossus pictus; Emyx trinacris; Natrix helvetica; Pelophylax kl. esculentus	12
3150	Bufotes siculus; Discoglossus pictus; Emyx trinacris; Natrix helvetica; Pelophylax kl. esculentus	12
5180	Agaparnthis sicula; Alceatoris graeca whitakeri; Alphasida grossa; Athene noctua; Brachygluta ragusae; Buteo buteo; Cetonia aurata sicula; Cicindela campestris siculorum; Corvus corax; Crocidura sicula; Erinaceus europaeus; Falco biarmicus; Falco peregrinus; Falco tinnunculus; Falco vespertinus; Lanus senator; Lepus corsicanus; Microtus nebrodensis; Milvus milvus; Mustela nivalis; Mylabris schreibersi; Podarcis siculus; Podarcis wagnerianus; Proteaia (Potosia) hypocrita; Pseudoeira doderi; Strix aluco; Uppa epos	49
	Agaparnthis sicula; Alceatoris graeca whitakeri; Amorphoccephala coronata; Brachygluta ragusae; Bufotes siculus; Buteo buteo; Cetonia aurata sicula; Corvus corax; Discoglossus pictus; Ficidula hypoleuca; Lanus senator; Lepus corsicanus; Meliboeus (Meliboeoides) amethystinus destefanii; Microtus nebrodensis; Milvus milvus; Mustela nivalis; Oriolus oriolus; Picoidea major; Podarcis siculus; Podarcis wagnerianus; Proteaia (Potosia) hypocrita; Pseudoeira doderi; Strix aluco; Uppa epos	44
9340	Agaparnthis sicula; Alceatoris graeca whitakeri; Amorphoccephala coronata; Brachygluta ragusae; Bufotes siculus; Buteo buteo; Cetonia aurata sicula; Corvus corax; Discoglossus pictus; Ficidula hypoleuca; Lanus senator; Lepus corsicanus; Meliboeus (Meliboeoides) amethystinus destefanii; Microtus nebrodensis; Milvus milvus; Mustela nivalis; Oriolus oriolus; Picoidea major; Podarcis siculus; Podarcis wagnerianus; Proteaia (Potosia) hypocrita; Pseudoeira doderi; Strix aluco; Uppa epos	44
32.215	Agaparnthis sicula; Alceatoris graeca whitakeri; Alphasida grossa; Athene noctua; Brachygluta ragusae; Bufotes siculus; Buteo buteo; Cetonia aurata sicula; Corvus corax; Crocidura sicula; Erinaceus europaeus; Falco biarmicus; Falco peregrinus; Falco tinnunculus; Falco vespertinus; Felis silvestris; Hystrix cristata; Lacerta bilineata; Lanus senator; Lepus corsicanus; Microtus nebrodensis; Milvus milvus; Mustela nivalis; Mylabris schreibersi; Podarcis siculus; Podarcis wagnerianus; Proteaia (Potosia) hypocrita; Pseudoeira doderi; Pseudoeira lagrecai; Tycho hemensis; Uppa epos; Viper aaspis hagei; Zamenis lineatus	63
41.732	Buteo buteo; Cetonia aurata sicula; Felis silvestris; Ficidula hypoleuca; Martes martes; Meliboeus (Meliboeoides) amethystinus destefanii; Milvus milvus; Natrix helvetica; Oriolus oriolus; Picoidea major; Proteaia (Potosia) hypocrita; Strix aluco	22
83.322	Athene noctua; Bufotes siculus; Buteo buteo; Cetonia aurata sicula; Columba livia; Corvus corax; Discoglossus pictus; Falco biarmicus; Falco tinnunculus; Falco vespertinus; Lanus senator; Lepus corsicanus; Microtus nebrodensis; Milvus milvus; Mustela nivalis; Oriolus oriolus; Picoidea major; Podarcis siculus; Proteaia (Potosia) hypocrita; Uppa epos	42
83.325	Athene noctua; Bufotes siculus; Buteo buteo; Cetonia aurata sicula; Columba livia; Corvus corax; Discoglossus pictus; Falco biarmicus; Falco tinnunculus; Falco vespertinus; Lanus senator; Lepus corsicanus; Microtus nebrodensis; Milvus milvus; Mustela nivalis; Oriolus oriolus; Picoidea major; Podarcis siculus; Proteaia (Potosia) hypocrita; Uppa epos	42
22.1	Bufotes siculus; Discoglossus pictus; Emyx trinacris; Natrix helvetica; Pelophylax kl. esculentus	12
31.81	Agaparnthis sicula; Alceatoris graeca whitakeri; Alphasida grossa; Athene noctua; Brachygluta ragusae; Bufotes siculus; Buteo buteo; Cetonia aurata sicula; Cicindela campestris siculorum; Corvus corax; Discoglossus pictus; Falco biarmicus; Falco peregrinus; Falco tinnunculus; Falco vespertinus; Felis silvestris; Hystrix cristata; Lacerta bilineata; Lanus senator; Lepus corsicanus; Microtus nebrodensis; Milvus milvus; Mustela nivalis; Mylabris schreibersi; Podarcis siculus; Podarcis wagnerianus; Proteaia (Potosia) hypocrita; Pseudoeira doderi; Pseudoeira lagrecai; Tycho hemensis; Uppa epos; Viper aaspis hagei; Zamenis lineatus	63
31.8A	Agaparnthis sicula; Alceatoris graeca whitakeri; Alphasida grossa; Athene noctua; Brachygluta ragusae; Bufotes siculus; Buteo buteo; Cetonia aurata sicula; Cicindela campestris siculorum; Corvus corax; Discoglossus pictus; Falco biarmicus; Falco peregrinus; Falco tinnunculus; Falco vespertinus; Felis silvestris; Hystrix cristata; Lacerta bilineata; Lanus senator; Lepus corsicanus; Microtus nebrodensis; Milvus milvus; Mustela nivalis; Mylabris schreibersi; Podarcis siculus; Podarcis wagnerianus; Proteaia (Potosia) hypocrita; Pseudoeira doderi; Pseudoeira lagrecai; Tycho hemensis; Uppa epos; Viper aaspis hagei; Zamenis lineatus	63
31.70*	Bufotes siculus; Discoglossus pictus; Emyx trinacris; Natrix helvetica; Pelophylax kl. esculentus	12
32.A	Agaparnthis sicula; Alceatoris graeca whitakeri; Alphasida grossa; Athene noctua; Brachygluta ragusae; Bufotes siculus; Buteo buteo; Cetonia aurata sicula; Cicindela campestris siculorum; Corvus corax; Discoglossus pictus; Falco biarmicus; Falco peregrinus; Falco tinnunculus; Falco vespertinus; Felis silvestris; Hystrix cristata; Lacerta bilineata; Lanus senator; Lepus corsicanus; Microtus nebrodensis; Milvus milvus; Mustela nivalis; Mylabris schreibersi; Podarcis siculus; Podarcis wagnerianus; Proteaia (Potosia) hypocrita; Pseudoeira doderi; Pseudoeira lagrecai; Tycho hemensis; Uppa epos; Viper aaspis hagei; Zamenis lineatus	63
34.36	Agaparnthis sicula; Alceatoris graeca whitakeri; Alphasida grossa; Athene noctua; Brachygluta ragusae; Buteo buteo; Cetonia aurata sicula; Cicindela campestris siculorum; Corvus corax; Crocidura sicula; Erinaceus europaeus; Falco biarmicus; Falco peregrinus; Falco tinnunculus; Falco vespertinus; Lanus senator; Lepus corsicanus; Microtus nebrodensis; Milvus milvus; Mustela nivalis; Mylabris schreibersi; Podarcis siculus; Podarcis wagnerianus; Proteaia (Potosia) hypocrita; Pseudoeira doderi; Pseudoeira lagrecai; Uppa epos	49
34.74	Agaparnthis sicula; Alceatoris graeca whitakeri; Alphasida grossa; Athene noctua; Brachygluta ragusae; Buteo buteo; Cetonia aurata sicula; Cicindela campestris siculorum; Corvus corax; Crocidura sicula; Erinaceus europaeus; Falco biarmicus; Falco peregrinus; Falco tinnunculus; Falco vespertinus; Lanus senator; Lepus corsicanus; Microtus nebrodensis; Milvus milvus; Mustela nivalis; Mylabris schreibersi; Podarcis siculus; Podarcis wagnerianus; Proteaia (Potosia) hypocrita; Pseudoeira doderi; Pseudoeira lagrecai; Uppa epos	49
34.81	Agaparnthis sicula; Alceatoris graeca whitakeri; Alphasida grossa; Athene noctua; Brachygluta ragusae; Buteo buteo; Cetonia aurata sicula; Cicindela campestris siculorum; Corvus corax; Crocidura sicula; Erinaceus europaeus; Falco biarmicus; Falco peregrinus; Falco tinnunculus; Falco vespertinus; Lanus senator; Lepus corsicanus; Microtus nebrodensis; Milvus milvus; Mustela nivalis; Mylabris schreibersi; Podarcis siculus; Podarcis wagnerianus; Proteaia (Potosia) hypocrita; Pseudoeira doderi; Pseudoeira lagrecai; Uppa epos	49
38.11	Agaparnthis sicula; Alceatoris graeca whitakeri; Alphasida grossa; Athene noctua; Brachygluta ragusae; Buteo buteo; Cetonia aurata sicula; Cicindela campestris siculorum; Corvus corax; Crocidura sicula; Erinaceus europaeus; Falco biarmicus; Falco peregrinus; Falco tinnunculus; Falco vespertinus; Lanus senator; Lepus corsicanus; Microtus nebrodensis; Milvus milvus; Mustela nivalis; Mylabris schreibersi; Natrix helvetica; Pelophylax kl. esculentus; Pseudoeira doderi; Pseudoeira lagrecai; Uppa epos	50
44.81	Bufotes siculus; Buteo buteo; Cetonia aurata sicula; Discoglossus pictus; Emyx trinacris; Felis silvestris; Ficidula hypoleuca; Martes martes; Meliboeus (Meliboeoides) amethystinus destefanii; Milvus milvus; Natrix helvetica; Oriolus oriolus; Pelophylax kl. esculentus; Picoidea major; Proteaia (Potosia) hypocrita; Strix aluco	32
6202*	Agaparnthis sicula; Alceatoris graeca whitakeri; Alphasida grossa; Athene noctua; Brachygluta ragusae; Buteo buteo; Cetonia aurata sicula; Cicindela campestris siculorum; Corvus corax; Crocidura sicula; Erinaceus europaeus; Falco biarmicus; Falco peregrinus; Falco tinnunculus; Falco vespertinus; Lanus senator; Lepus corsicanus; Microtus nebrodensis; Milvus milvus; Mustela nivalis; Mylabris schreibersi; Podarcis siculus; Podarcis wagnerianus; Proteaia (Potosia) hypocrita; Pseudoeira doderi; Pseudoeira lagrecai; Uppa epos	49
6202*	Agaparnthis sicula; Alceatoris graeca whitakeri; Alphasida grossa; Athene noctua; Brachygluta ragusae; Buteo buteo; Cetonia aurata sicula; Cicindela campestris siculorum; Corvus corax; Crocidura sicula; Erinaceus europaeus; Falco biarmicus; Falco peregrinus; Falco tinnunculus; Falco vespertinus; Lanus senator; Lepus corsicanus; Microtus nebrodensis; Milvus milvus; Mustela nivalis; Mylabris schreibersi; Podarcis siculus; Podarcis wagnerianus; Proteaia (Potosia) hypocrita; Pseudoeira doderi; Pseudoeira lagrecai; Uppa epos	49
82.3	Athene noctua; Bufotes siculus; Buteo buteo; Cetonia aurata sicula; Corvus corax; Falco biarmicus; Falco tinnunculus; Falco vespertinus; Lanus senator; Lepus corsicanus; Microtus nebrodensis; Milvus milvus; Mustela nivalis; Uppa epos	30
82.3A	Athene noctua; Bufotes siculus; Buteo buteo; Cetonia aurata sicula; Corvus corax; Falco biarmicus; Falco tinnunculus; Falco vespertinus; Lanus senator; Lepus corsicanus; Microtus nebrodensis; Milvus milvus; Mustela nivalis; Uppa epos	30
83.11	Athene noctua; Bufotes siculus; Buteo buteo; Cetonia aurata sicula; Columba livia; Corvus corax; Discoglossus pictus; Falco biarmicus; Falco tinnunculus; Falco vespertinus; Lanus senator; Lepus corsicanus; Microtus nebrodensis; Milvus milvus; Mustela nivalis; Oriolus oriolus; Picoidea major; Podarcis siculus; Proteaia (Potosia) hypocrita; Uppa epos	42
83.15	Athene noctua; Bufotes siculus; Buteo buteo; Cetonia aurata sicula; Columba livia; Corvus corax; Discoglossus pictus; Falco biarmicus; Falco tinnunculus; Falco vespertinus; Lanus senator; Lepus corsicanus; Microtus nebrodensis; Milvus milvus; Mustela nivalis; Oriolus oriolus; Picoidea major; Podarcis siculus; Proteaia (Potosia) hypocrita; Uppa epos	42
83.21	Athene noctua; Bufotes siculus; Buteo buteo; Cetonia aurata sicula; Columba livia; Corvus corax; Discoglossus pictus; Falco biarmicus; Falco tinnunculus; Falco vespertinus; Lanus senator; Lepus corsicanus; Microtus nebrodensis; Milvus milvus; Mustela nivalis; Oriolus oriolus; Picoidea major; Podarcis siculus; Proteaia (Potosia) hypocrita; Uppa epos	42
83.31	Athene noctua; Bufotes siculus; Buteo buteo; Cetonia aurata sicula; Columba livia; Corvus corax; Discoglossus pictus; Falco biarmicus; Falco tinnunculus; Falco vespertinus; Lanus senator; Lepus corsicanus; Microtus nebrodensis; Milvus milvus; Mustela nivalis; Oriolus oriolus; Picoidea major; Podarcis siculus; Proteaia (Potosia) hypocrita; Uppa epos	42
86.2	Athene noctua; Columba livia; Falco tinnunculus; Podarcis siculus	8
86.22	Athene noctua; Columba livia; Falco tinnunculus; Podarcis siculus	8
86.3	Athene noctua; Columba livia; Falco tinnunculus; Podarcis siculus	8
91A4*	Buteo buteo; Cetonia aurata sicula; Felis silvestris; Ficidula hypoleuca; Martes martes; Meliboeus (Meliboeoides) amethystinus destefanii; Milvus milvus; Natrix helvetica; Oriolus oriolus; Pelophylax kl. esculentus; Picoidea major; Proteaia (Potosia) hypocrita; Strix aluco	22
9200	Bufotes siculus; Buteo buteo; Cetonia aurata sicula; Discoglossus pictus; Emyx trinacris; Felis silvestris; Ficidula hypoleuca; Martes martes; Meliboeus (Meliboeoides) amethystinus destefanii; Milvus milvus; Natrix helvetica; Oriolus oriolus; Pelophylax kl. esculentus; Picoidea major; Proteaia (Potosia) hypocrita; Strix aluco	32
9340	Athene noctua; Bufotes siculus; Buteo buteo; Cetonia aurata sicula; Columba livia; Corvus corax; Discoglossus pictus; Falco biarmicus; Falco tinnunculus; Falco vespertinus; Lanus senator; Lepus corsicanus; Microtus nebrodensis; Milvus milvus; Mustela nivalis; Oriolus oriolus; Picoidea major; Podarcis siculus; Proteaia (Potosia) hypocrita; Uppa epos	42



Assessorato del Territorio e dell'Ambiente  
Dipartimento Regionale dell'Ambiente

CARTA DEGLI HABITAT  
DELLE SPECIE DELLA FAUNA  
(Dir. 92/43/CEE - Dir. 2009/147/CE)

TAV.  
1



CODICE SITO  
DENOMINAZIONE

ITA060004  
Monte Altesina

Coordinate System: RDN2008 UTM zone 33N  
Projection: Transverse Mercator  
Datum: Rete Dinamica Nazionale 2008  
False Easting: 500.000.000  
False Northing: 0.0000  
Central Meridian: 15.0000  
Scale Factor: 0.9996  
Latitude Of Origin: 0.0000  
Units: Meter

Confine del sito Natura 2000

**Valore di idoneità complessivo**

50,000001 - 63,000000

49,000001 - 50,000000

44,000001 - 49,000000

42,000001 - 44,000000

32,000001 - 42,000000

30,000001 - 32,000000

22,000001 - 30,000000

12,000001 - 22,000000

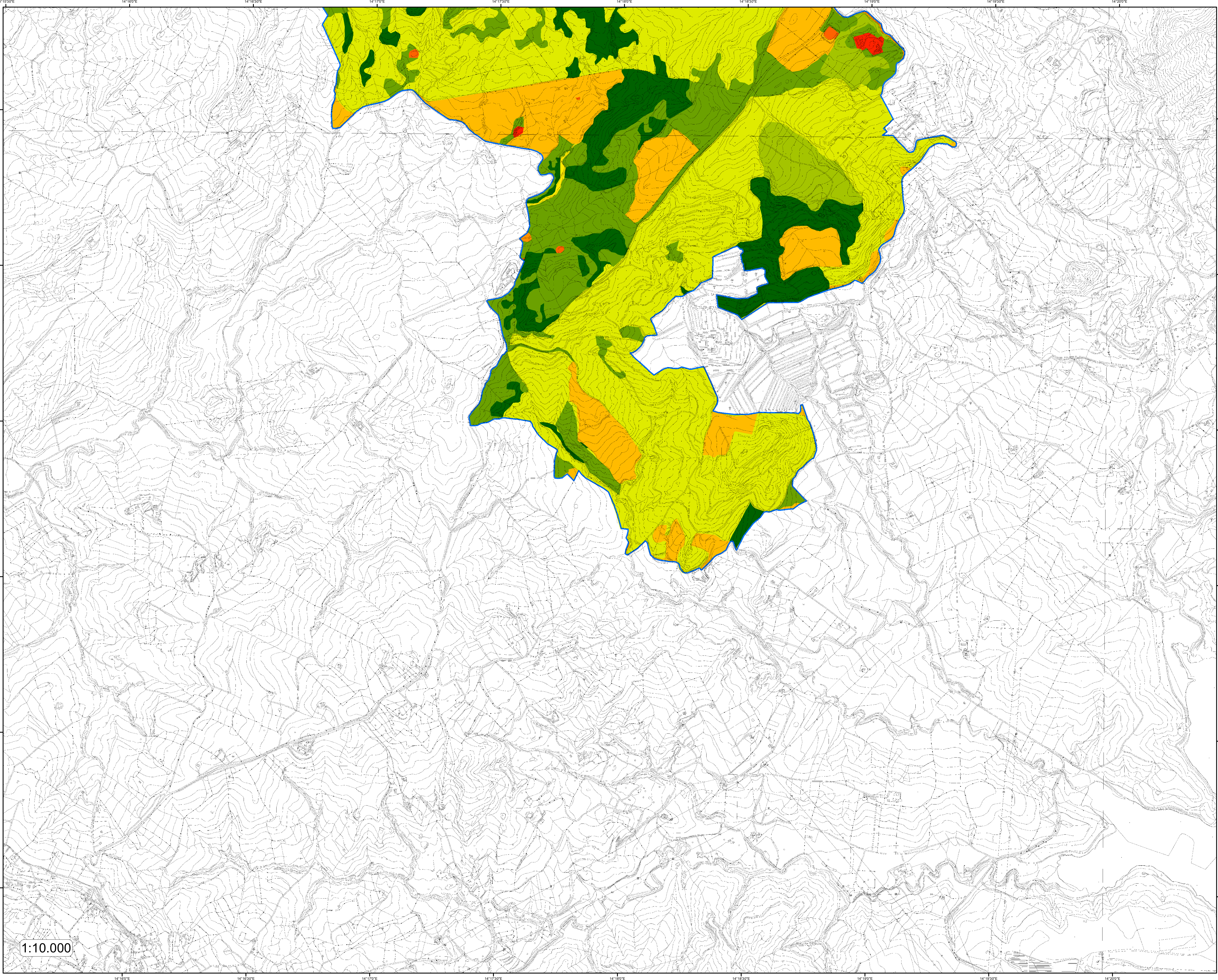
8,000001 - 12,000000

8,000000

00.050.10.20.30.40

Miles

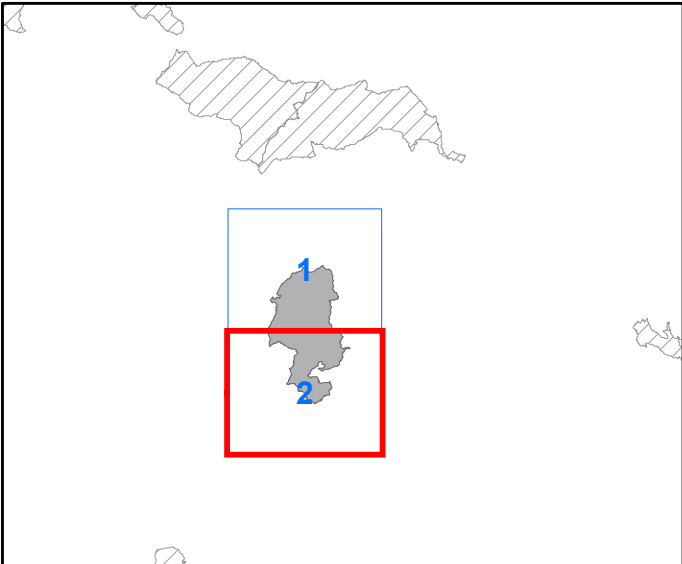




Assessorato del Territorio e dell'Ambiente  
Dipartimento Regionale dell'Ambiente

CARTA DEGLI HABITAT  
DELLE SPECIE DELLA FAUNA  
(Dir. 92/43/CEE - Dir. 2009/147/CE)

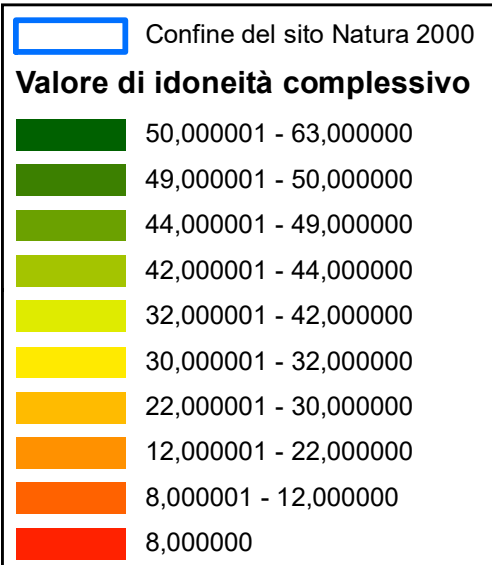
TAV.  
2



CODICE SITO  
DENOMINAZIONE  
**Monte Altesina**

ITA060004

Coordinate System: RDN2008 UTM zone 33N  
Projection: Transverse Mercator  
Datum: Rete Dinamica Nazionale 2008  
False Easting: 500,000,000  
False Northing: 0,0000  
Central Meridian: 15,0000  
Scale Factor: 0,9996  
Latitude Of Origin: 0,0000  
Units: Meter



1:10.000

0 0,05 0,1 0,2 0,3 0,4  
Miles